

# KANTRONIK





ANGETRIEBENE WERKZEUGHALTER  
FÜR CNC-DREHMASCHINEN NACH DIN 69880



DRIVEN TOOLS FOR CNC  
LATHES TO DIN 69880



ПРИВОДНЫЕ ТОКАРНЫЕ ГОЛОВКИ ПО  
DIN 69880 ДЛЯ СТАНКОВ С ЧПУ



PORTE-OUTILS TOURNANTS VDI  
POUR TOURS CNC SELON DIN 69880



PORTAUTENSILI ROTANTI VDI  
PER TORNI CNC SECONDO DIN 69880



符合 DIN 69880 标准的  
CNC 数控车床驱动工具

- DIN 5480 PAG. 280-283
- DIN 5482 PAG. 284-287
- DIN 1809 PAG. 288-291
- TOEM BARUFFALDI PAG. 292-295
- HAAS PAG. 296-297
- OKUMA PAG. 298-301
- MAZAK PAG. 304-305
- MORI SEIKI PAG. 306-307
- BMT 55 - BMT 65 - BMT 75 PAG. 308-310



## ANGETRIEBENE WERKZEUGE

WIR MÖCHTEN INFORMIEREN, SIE KÖNNEN NACH DER VERFÜGBARKEIT DER ANGETRIEBENEN WERKZEUGHALTER FÜR JEDE TYPOLOGIE VON WERKZEUGMASCHINE DIREKT AUS DER WEBSEITE [WWW.KINTEK.IT](http://WWW.KINTEK.IT) FRAGEN. HIER SIND NUR EINIGE BEISPIELE:



## DRIVEN TOOLHOLDERS

WE WOULD LIKE TO INFORM YOU THAT YOU CAN CONSULT THE AVAILABILITY OF THE DRIVEN TOOLHOLDERS FOR EACH TYPE OF MACHINE TOOL DIRECTLY FROM THE WEBSITE [WWW.KINTEK.IT](http://WWW.KINTEK.IT). HERE ARE ONLY SOME EXAMPLES:



## ПРИВОДНЫЕ ИНСТРУМЕНТЫ

Мы хотели бы Вас проинформировать, что Вы можете получить у нас консультацию по наличию и другим приводных головок любого типа на нашем сайте [WWW.KINTEK.IT](http://WWW.KINTEK.IT)



## PORTE-OUTIL TOURNANTS

NOUS VOUS INFORMONS QUE VOUS POUVEZ RECHERCHER LA DISPONIBILITÉ DES PORTE-OUTILS TOURNANTS POUR CHAQUE TYPOLOGIE DE MACHINE-OUTIL DIRECTEMENT À LA PAGE [WWW.KINTEK.IT](http://WWW.KINTEK.IT). VOILÀ SEULEMENT QUELQUES EXEMPLES:



## PORTAUTENSILI MOTORIZZATI

VI INFORMIAMO CHE POTETE CONSULTARE LA DISPONIBILITA' DI PORTAUTENSILI MOTORIZZATI PER OGNI TIPOLOGIA DI MACCCHINA UTENSILE DIRETTAMENTE DAL SITO [WWW.KINTEK.IT](http://WWW.KINTEK.IT), QUI DI SEGUITO SOLO ALCUNI ESEMPI:



## 驱动刀柄

您可以通过访问网站 [WWW.KINTEK.IT](http://WWW.KINTEK.IT) 了解每种机器所配驱动工具柄的全部产品，举例如下

MACHINE	TYPE	VDI	PRODUCT TYPE	COUPLING TYPE	TOOL GRIP DIMENSION	INTERNAL COOLING	DIRECTION	KINTEK CODE
DOOSAN DAEWOO	LYNX 300M	BMT55	RADIAL	BMT55	ER25	NO	RIGHT	KIN-B04.60-55A
DOOSAN DAEWOO	PUMA 1500M/MS/Y/SY	BMT55	AXIAL	BMT55	ER25	NO		KIN-A04-55A
DOOSAN DAEWOO	PUMA 2100 SERIE	BMT55	RADIAL	BMT55	ER25	NO	RIGHT	KIN-B04.60-55A
DOOSAN DAEWOO	PUMA 230-240M/MS	BMT55	AXIAL	BMT55	ER25	NO		KIN-A04-55A
GILDEMEISTER	CTX alpha 300 (DISC)	30	AXIAL	DIN 5480	ER25	NO		KIN30-131-25-1
GILDEMEISTER	CTX beta 500 VDI30 (STAR)	30	RADIAL	DIN 5480	ER25	NO	RIGHT	KIN30-231-25185
GILDEMEISTER	CTX beta 800 VDI30 (DISC)	30	OFFSET RADIAL	DIN 5480	ER25	20bar	RIGHT	KIN30-431-25-2
GILDEMEISTER	CTX420 linear (DISC)	40	RADIAL	DIN 5480	ER25	NO	RIGHT	KIN40-231-25-1
HAAS	SL30 (DISC)	40	AXIAL	STEPPED	ER25	NO		KIN40-151-25-1
HAAS	SL30 Hybrid turret (DISC)	40	RADIAL	STEPPED	ER25	NO	LEFT	KIN40-251-25-1B
HAAS	TL-15 Hybrid turret (DISC)	40	AXIAL	STEPPED	ER25	NO		KIN40-151-25-1B
HAAS	TL-25 Hybrid turret (DISC)	40	RADIAL	STEPPED	ER25	NO	LEFT	KIN40-251-25-1B
HARDINGE	GS150M VDI30 (DISC)	30	AXIAL	DIN 5480	ER25	NO		KIN30-131-25-1
HARDINGE	GS200M VDI30 (DISC)	30	RADIAL	DIN 5480	ER25	20bar	RIGHT	KIN30-231-25-2
HARDINGE	GS200MSY (DISC)	40	OFFSET RADIAL	DIN 5480	ER25	NO	RIGHT	KIN40-431-25-1
HARDINGE	Talent 10/78 (DISC)	40	RADIAL	DIN 1809	ER25	NO	RIGHT	KIN40-221-25-1
MAZAK	QTN200M/MS/MY/MSY	40	AXIAL		ER32	NO		KMZ-40AOLE32E01
MAZAK	SQT18M/MS	40	RADIAL		ER32	NO	RIGHT	KMZ-40A9LE32E01
MAZAK	SQT200M/MS	40	AXIAL		ER32	NO		KMZ-40AOLE32E01
MAZAK	SQT250M/MS	40	RADIAL		ER32	NO	RIGHT	KMZ-40A9LE32E01
MORI SEIKI	Dura turn 310Eco (DISC)	30	AXIAL	DIN 5480	ER25	NO		KIN30-131-25-1
MORI SEIKI	NL-2000 (BMT STAR)	60	RADIAL		ER32	20bar	RIGHT/LEFT	KIN2-60201-32-2
MORI SEIKI	NT-4300 (BMT STAR)	60	RADIAL		ER32	20bar	RIGHT/LEFT	KIN2-60201-32-2
MORI SEIKI	NT-5400 (BMT STAR)	60	AXIAL		ER32	20bar		KIN2-60101-32-2
WFL	WNC300 (DISC)	30	OFFSET RADIAL	DIN 5482	ER25	NO	RIGHT	KIN30-411-25-1
WFL	WNC300 VDI40 (DISC)	40	AXIAL	DIN 5482	ER32	NO		KIN40-111-32-1
WFL	WNC400 (DISC)	40	RADIAL	DIN 5482	ER25	NO	RIGHT	KIN40-211-25-1

**KAMATEK**

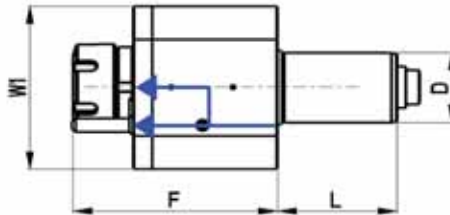
**DIN 5480**





AXIAL BOHR- UND FRÄSKOPF TÊTE DE PERÇAGE ET FRAISAGE  
 AXIAL DRILLING AND MILLING HEAD PORTAUTENSILE MOTORIZZATO ASSIALE  
 АКСИАЛЬНАЯ СВЕРЛИЛЬНО-ФРЕЗЕРНАЯ ГОЛОВКА 轴向钻铣头

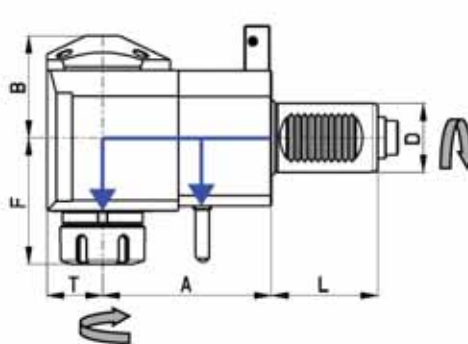
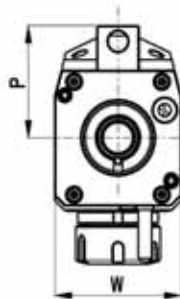
DIN 5480 SAUTER



Code N.	D	Clamping application	Internal cooling	F	L	W	W1	Max Torque (Nm)	Max Speed (rpm)	i
KIN1-30/131-25/1	30	ER25	no	87	55	62	69	28	6000	1:1
KIN1-30/131-25/2	30	ER25	yes	87	55	62	69	28	6000	1:1
KIN1-40/131-25/1	40	ER25	no	105	63	76	94	50	6000	1:1
KIN1-40/131-25/2	40	ER25	yes	105	63	76	94	50	6000	1:1
KIN1-40/131-32/1	40	ER32	no	108	63	76	94	50	6000	1:1
KIN1-40/131-32/2	40	ER32	yes	108	63	76	94	50	6000	1:1

RADIAL BOHR- UND FRÄSKOPF TÊTE DE PERÇAGE ET FRAISAGE RADIAL  
 RADIAL DRILLING AND MILLING HEAD PORTAUTENSILE MOTORIZZATO RADIALE  
 РАДИАЛЬНАЯ СВЕРЛИЛЬНО-ФРЕЗЕРНАЯ ГОЛОВКА 径向钻铣头

DIN 5480 SAUTER



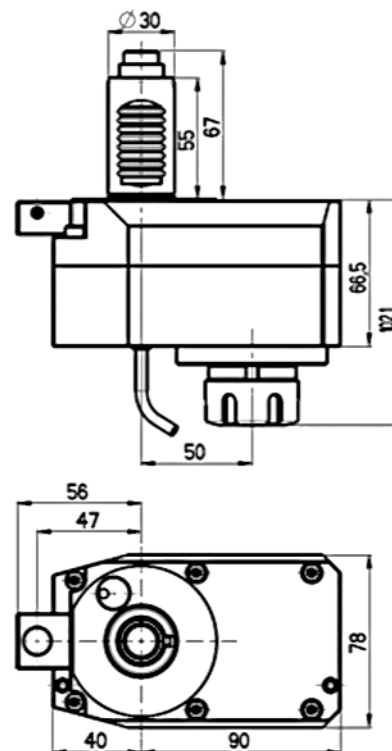
Code N.	D	Clamping application	Internal cooling	Direction	A	B	F	L	P	T	W	Max Torque (Nm)	Max Speed (rpm)	i
KIN1-30/231-25/1.1-55	30	ER25	no	right	55	48	63	55	56	26	64	28	6000	1:1
KIN1-30/231-25/2.1-55	30	ER25	yes	right	55	51	63	55	56	26	64	28	6000	1:1
KIN1-30/231-25/1.1-85	30	ER25	no	right	85	48	63	55	56	26	64	28	6000	1:1
KIN1-30/231-25/2.1-85	30	ER25	yes	right	85	51	63	55	56	26	64	28	6000	1:1
KIN1-40/231-25/1.1-80	40	ER25	no	right	80	59	70	63	65	33	75	50	6000	1:1
KIN1-40/231-25/2.1-80	40	ER25	yes	right	80	62	70	63	65	33	75	50	6000	1:1
KIN1-40/231-25/1.1-100	40	ER25	no	right	100	59	70	63	65	33	75	50	6000	1:1
KIN1-40/231-25/2.1-100	40	ER25	yes	right	100	62	70	63	65	33	75	50	6000	1:1
KIN1-40/231-32/1.1-80	40	ER32	no	right	80	59	74	63	65	33	75	50	6000	1:1
KIN1-40/231-32/2.1-80	40	ER32	yes	right	80	62	74	63	65	33	75	50	6000	1:1
KIN1-40/231-32/1.1-100	40	ER32	no	right	100	59	74	63	65	33	75	50	6000	1:1
KIN1-40/231-32/2.1-100	40	ER32	yes	right	100	62	74	63	65	33	75	50	6000	1:1

\* Linksausführung auf Anfrage \* Left version on enquiry \* Левое исполнение по запросу \* Versione gauche sur demande \* A richiesta la versione sinistra \* 左边版本可查。

AXIAL BOHR- UND FRÄSKOPF, ZURÜCKGESETZT  
 OFFSET AXIAL DRILLING AND MILLING HEAD  
 АКСИАЛЬНАЯ СВЕРЛИЛЬНО-ФРЕЗЕРНАЯ ГОЛОВКА СО СМЕЩЕННЫМ ЦЕНТРОМ

TÊTE DE PERÇAGE ET FRAISAGE AXIAL, ARRIÈRE  
 PORTAUTENSILE MOTORIZZATO ASSIALE DISASSATO  
 轴向钻头.偏移

DIN 5480

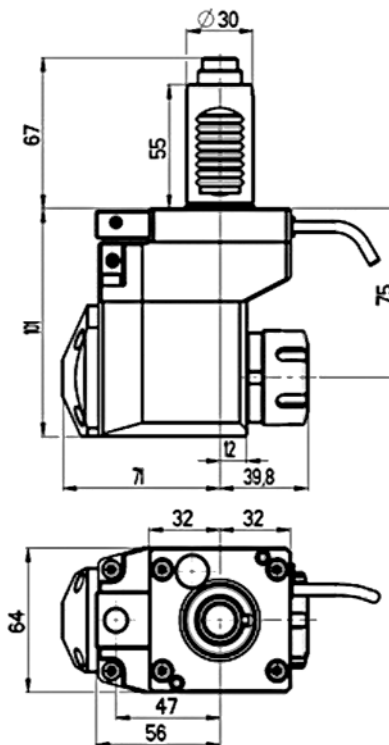


Code N.	D	ER	Cooling	A	B	F	L	P	T	W	Max:Torque Nm	Nmax	I(rev.)
KIN30-331-25-1	30	ER25	EXT	50	40	102	55	56	90	78	14	12000	1:2

RADIAL BOHR- UND FRÄSKOPF, ZURÜCKGESETZT  
 OFFSET RADIAL DRILLING AND MILLING HEAD  
 РАДИАЛЬНАЯ СВЕРЛИЛЬНО-ФРЕЗЕРНАЯ ГОЛОВКА СО СМЕЩЕНИЕМ

TÊTE DE PERÇAGE ET FRAISAGE RADIALE, ARRIÈRE  
 PORTAUTENSILE MOTORIZZATO RADIALE ARRETRATO  
 径向钻头头, 偏移

DIN 5480



Code N.	D	ER	Cooling	A	B	F	L	P	T	W	Max: Torque Nm	Nmax	I
KIN30-431-25-1	30	ER25	EXT	75	71	39,8	55	56	101	64	28	6000	1:1
KIN30-431-25-2	30	ER25	EXT+INT	75	73,5	39,8	55	56	101	64	28	6000	1:1
KIN40-431-25-1	40	ER25	EXT	120	92,2	36,6	63	65	153	75	50	6000	1:1
KIN40-431-25-2	40	ER25	EXT+INT	120	95,2	36,6	63	65	153	75	50	6000	1:1
KIN40-431-32-1	40	ER32	EXT	120	92,2	40,6	63	65	153	75	50	6000	1:1
KIN40-431-32-2	40	ER32	EXT+INT	120	95,2	40,6	63	65	153	75	50	6000	1:1



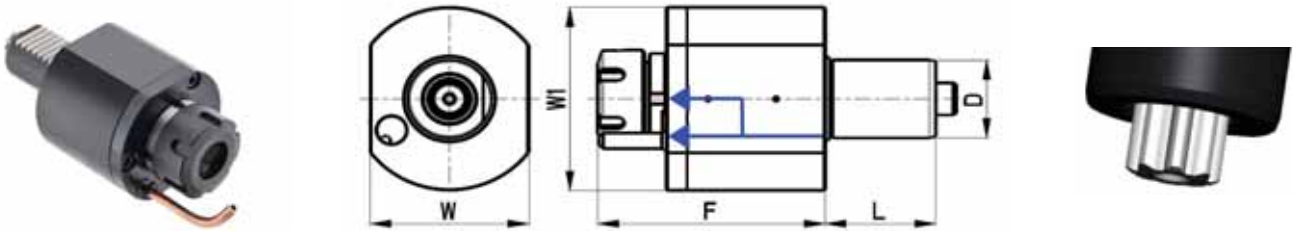
**KAMATEK**

**DIN 5482**



AXIAL BOHR- UND FRÄSKOPF TÊTE DE PERÇAGE ET FRAISAGE  
 AXIAL DRILLING AND MILLING HEAD PORTAUTENSILE MOTORIZZATO ASSIALE  
 АКСИАЛЬНАЯ СВЕРЛИЛЬНО-ФРЕЗЕРНАЯ ГОЛОВКА 轴向钻铣头

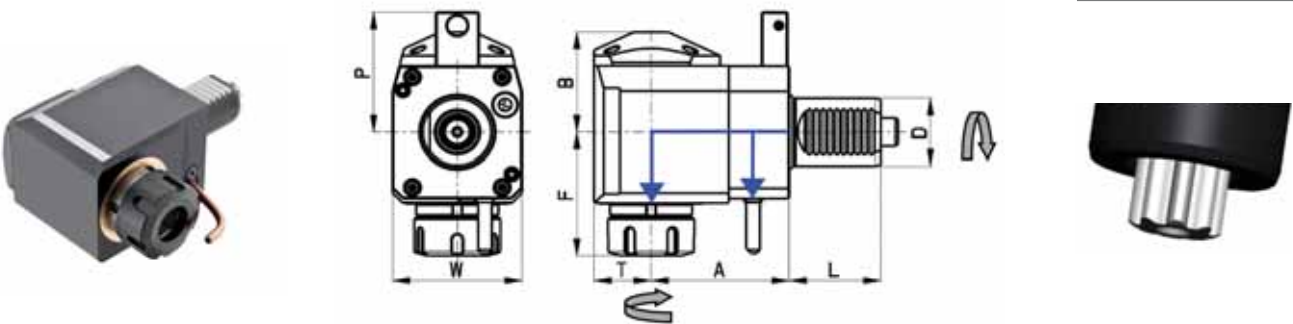
DIN 5482 SAUTER



Code N.	D	Clamping application	Internal cooling	F	L	W	W1	Max Torque (Nm)	Max Speed (rpm)	i
KIN1-30/111-25/1	30	ER25	no	87	45	62	69	28	6000	1:1
KIN1-30/111-25/2	30	ER25	yes	87	45	62	69	28	6000	1:1
KIN1-40/111-25/1	40	ER25	no	105	53	76	94	50	6000	1:1
KIN1-40/111-25/2	40	ER25	yes	105	53	76	94	50	6000	1:1
KIN1-40/111-32/1	40	ER32	no	108	53	76	94	50	6000	1:1
KIN1-40/111-32/2	40	ER32	yes	108	53	76	94	50	6000	1:1

RADIAL BOHR- UND FRÄSKOPF TÊTE DE PERÇAGE ET FRAISAGE RADIAL  
 RADIAL DRILLING AND MILLING HEAD PORTAUTENSILE MOTORIZZATO RADIALE  
 РАДИАЛЬНАЯ СВЕРЛИЛЬНО-ФРЕЗЕРНАЯ ГОЛОВКА 径向钻铣头

DIN 5482 SAUTER



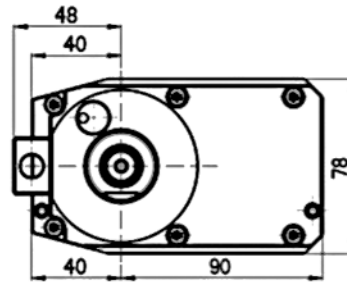
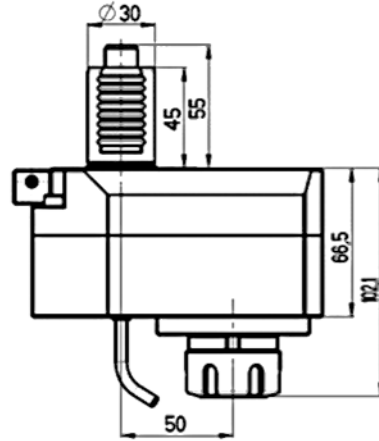
Code N.	D	Clamping application	Internal cooling	Direction	A	B	F	L	P	T	W	Max Torque (Nm)	Max Speed (rpm)	i
KIN1-30/211-25/1.1-55	30	ER25	no	right	55	48	63	45	48	26	64	28	6000	1:1
KIN1-30/211-25/2.1-55	30	ER25	yes	right	55	51	63	45	48	26	64	28	6000	1:1
KIN1-40/211-25/1.1-80	40	ER25	no	right	80	59	70	53	71	33	75	50	6000	1:1
KIN1-40/211-25/2.1-80	40	ER25	yes	right	80	62	70	53	71	33	75	50	6000	1:1
KIN1-40/211-32/1.1-80	40	ER32	no	right	80	59	74	53	71	33	75	50	6000	1:1
KIN1-40/211-32/2.1-80	40	ER32	yes	right	80	62	74	53	71	33	75	50	6000	1:1

\* Linksausführung auf Anfrage \* Left version on enquiry \* Левое исполнение по запросу \* Versione gauche sur demande \* A richiesta la versione sinistra \* 左边版本可查。

AXIAL BOHR- UND FRÄSKOPF, ZURÜCKGESETZT  
 OFFSET AXIAL DRILLING AND MILLING HEAD  
 АКСИАЛЬНАЯ СВЕРЛИЛЬНО-ФРЕЗЕРНАЯ ГОЛОВКА СО СМЕЩЕННЫМ ЦЕНТРОМ

TÊTE DE PERÇAGE ET FRAISAGE AXIAL, ARRIÈRE  
 PORTAUTENSILE MOTORIZZATO ASSIALE DISASSATO  
 轴向钻头.偏移

DIN 5482

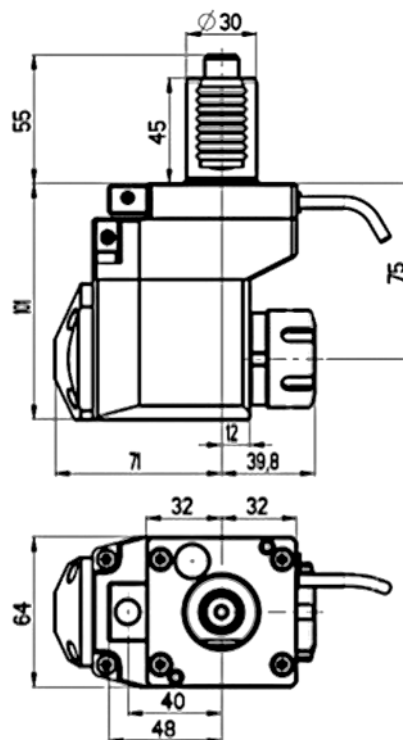


Code N.	D	ER	Cooling	A	B	F	L	P	T	W	Max:Torque Nm	Nmax	l(rev.)
KIN30-311-25-1	30	ER25	EXT	50	40	102	45	48	90	78	14	12000	1:2

RADIAL BOHR- UND FRÄSKOPF, ZURÜCKGESETZT  
 OFFSET RADIAL DRILLING AND MILLING HEAD  
 РАДИАЛЬНАЯ СВЕРЛИЛЬНО-ФРЕЗЕРНАЯ ГОЛОВКА СО СМЕЩЕНИЕМ

TÊTE DE PERÇAGE ET FRAISAGE RADIALE, ARRIÈRE  
 PORTAUTENSILE MOTORIZZATO RADIALE ARRETRATO  
 径向钻头, 偏移

DIN 5482



Code N.	D	ER	Cooling	A	B	F	L	P	T	W	Max: Torque Nm	Nmax	I
KIN30-411-25-1	30	ER25	EXT	75	71	39,8	45	48	101	64	28	6000	1:1
KIN30-411-25-2	30	ER25	EXT+INT	75	73,5	39,8	45	48	101	64	28	6000	1:1

**KAMATEK**

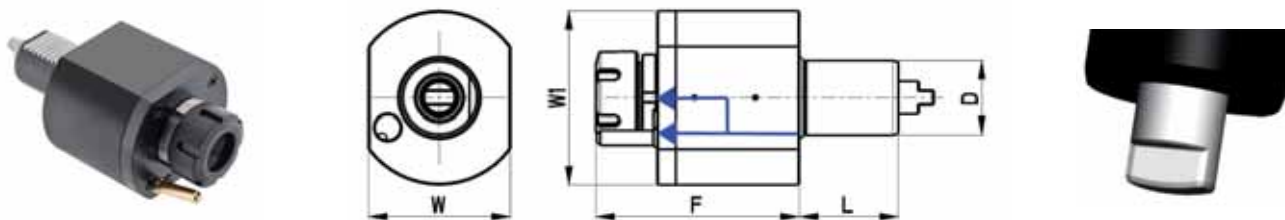
**DIN 1809**





AXIAL BOHR- UND FRÄSKOPF TÊTE DE PERÇAGE ET FRAISAGE  
 AXIAL DRILLING AND MILLING HEAD PORTAUTENSILE MOTORIZZATO ASSIALE  
 АКСИАЛЬНАЯ СВЕРЛИЛЬНО-ФРЕЗЕРНАЯ ГОЛОВКА 轴向钻铣头

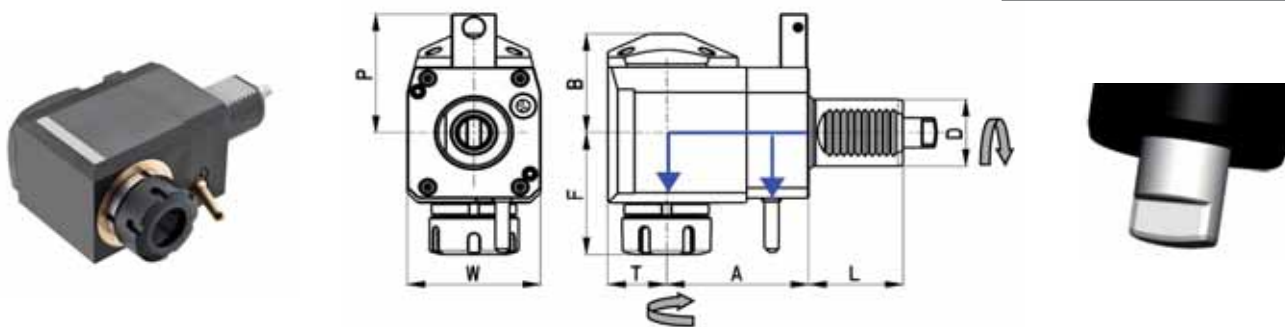
DIN1809 - DIPLOMATIC



Code N.	D	Clamping application	Internal cooling	F	L	W	W1	Max Torque (Nm)	Max Speed (rpm)	i
KIN1-30/121-25/1	30	ER25	no	87	45	62	69	28	6000	1:1
KIN1-30/121-25/2	30	ER25	yes	87	45	62	69	28	6000	1:1
KIN1-40/121-25/1	40	ER25	no	105	53	76	94	50	6000	1:1
KIN1-40/121-25/2	40	ER25	yes	105	53	76	94	50	6000	1:1
KIN1-40/121-32/1	40	ER32	no	108	53	76	94	50	6000	1:1
KIN1-40/121-32/2	40	ER32	yes	108	53	76	94	50	6000	1:1
KIN1-40/121-32/1S	40	ER32	no	95	53	76	94	50	6000	1:1
KIN1-40/121-32/2S	40	ER32	yes	95	53	76	94	50	6000	1:1

RADIAL BOHR- UND FRÄSKOPF TÊTE DE PERÇAGE ET FRAISAGE RADIAL  
 RADIAL DRILLING AND MILLING HEAD PORTAUTENSILE MOTORIZZATO RADIALE  
 РАДИАЛЬНАЯ СВЕРЛИЛЬНО-ФРЕЗЕРНАЯ ГОЛОВКА 径向钻铣头

DIN1809 - DIPLOMATIC



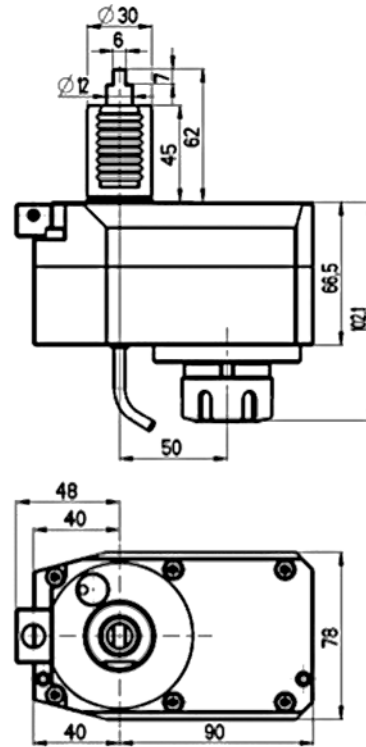
Code N.	D	Clamping application	Internal cooling	Direction	A	B	F	L	P	T	W	Max Torque (Nm)	Max Speed (rpm)	i
KIN1-30/221-25/1.1-55	30	ER25	no	right	55	48	63	45	48	26	64	28	6000	1:1
KIN1-30/221-25/2.1-55	30	ER25	yes	right	55	51	63	45	48	26	64	28	6000	1:1
KIN1-40/221-25/1.1-80	40	ER25	no	right	80	59	70	53	71	33	75	50	6000	1:1
KIN1-40/221-25/2.1-80	40	ER25	yes	right	80	62	70	53	71	33	75	50	6000	1:1
KIN1-40/221-32/1.1-80	40	ER32	no	right	80	59	74	53	71	33	75	50	6000	1:1
KIN1-40/221-32/2.1-80	40	ER32	yes	right	80	62	74	53	71	33	75	50	6000	1:1
KIN1-40/221-25/1.2-100D	40	ER25	no	left	100	59	70	53	-	33	75	50	6000	1:1
KIN1-40/221-25/2.2-100D	40	ER25	yes	left	100	62	70	53	-	33	75	50	6000	1:1
KIN1-40/221-32/1.2-100D	40	ER32	no	left	100	59	74	53	-	33	75	50	6000	1:1
KIN1-40/221-32/2.2-100D	40	ER32	yes	left	100	62	74	53	-	33	75	50	6000	1:1

\* Linksausführung auf Anfrage \* Left version on enquiry \* Левое исполнение по запросу \* Versione gauche sur demande \* A richiesta la versione sinistra \* 左边版本可查。

AXIAL BOHR- UND FRÄSKOPF, ZURÜCKGESETZT  
 OFFSET AXIAL DRILLING AND MILLING HEAD  
 АКСИАЛЬНАЯ СВЕРЛИЛЬНО-ФРЕЗЕРНАЯ ГОЛОВКА СО СМЕЩЕННЫМ ЦЕНТРОМ

TÊTE DE PERÇAGE ET FRAISAGE AXIAL, ARRIÈRE  
 PORTAUTENSILE MOTORIZZATO ASSIALE DISASSATO  
 轴向钻头, 偏移

DIN 1809

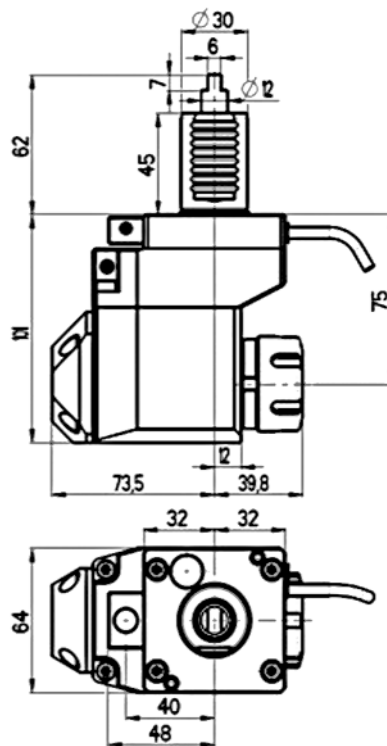


Code N.	D	ER	Cooling	A	B	F	L	P	T	W	Max: Torque Nm	Nmax	I(rev.)
KIN30-321-25-1	30	ER25	EXT	50	40	102	45	48	90	78	14	12000	1:2

RADIAL BOHR- UND FRÄSKOPF, ZURÜCKGESETZT  
 OFFSET RADIAL DRILLING AND MILLING HEAD  
 РАДИАЛЬНАЯ СВЕРЛИЛЬНО-ФРЕЗЕРНАЯ ГОЛОВКА СО СМЕЩЕНИЕМ

TÊTE DE PERÇAGE ET FRAISAGE RADIALE, ARRIÈRE  
 PORTAUTENSILE MOTORIZZATO RADIALE ARRETRATO  
 径向钻头.偏移

DIN 1809



Code N.	D	ER	Cooling	A	B	F	L	P	T	W	Max:Torque Nm	Nmax	I
KIN30-421-25-1	30	ER25	EXT	75	71	39,8	45	48	101	64	28	6000	1:1
KIN30-421-25-2	30	ER25	EXT+INT	75	73,5	39,8	45	48	101	64	28	6000	1:1

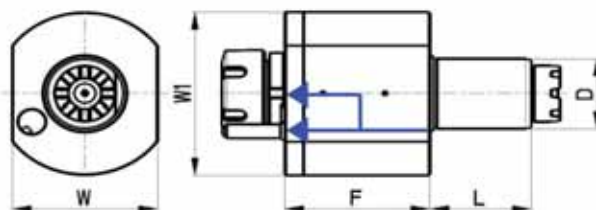
**KAMATEK**

**TOEM BARUFFALDI**



AXIAL BOHR- UND FRÄSKOPF TÊTE DE PERÇAGE ET FRAISAGE  
 AXIAL DRILLING AND MILLING HEAD PORTAUTENSILE MOTORIZZATO ASSIALE  
 АКСИАЛЬНАЯ СВЕРЛИЛЬНО-ФРЕЗЕРНАЯ ГОЛОВКА 轴向钻头

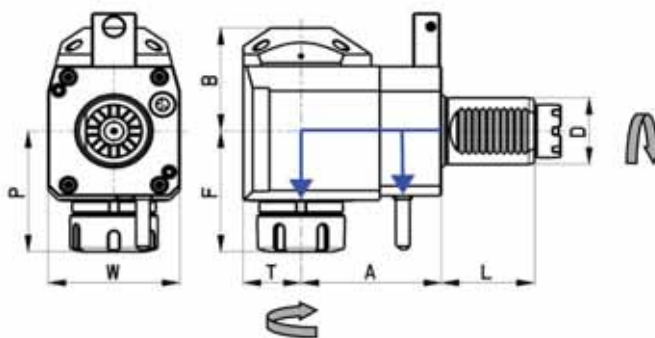
TOEM BARUFFALDI



Code N.	D	Clamping application	Internal cooling	F	L	W	W1	Max Torque (Nm)	Max Speed (rpm)	i	Z
KIN1-30/141-25/1	30	ER25	no	87	45	62	69	28	6000	1:1	6
KIN1-30/141-25/2	30	ER25	yes	87	45	62	69	28	6000	1:1	6
KIN1-40/141-25/1	40	ER25	no	105	53	76	94	50	6000	1:1	8
KIN1-40/141-25/2	40	ER25	yes	105	53	76	94	50	6000	1:1	8
KIN1-40/141-32/1	40	ER32	no	108	53	76	94	50	6000	1:1	8
KIN1-40/141-32/2	40	ER32	yes	108	53	76	94	50	6000	1:1	8

RADIAL BOHR- UND FRÄSKOPF TÊTE DE PERÇAGE ET FRAISAGE RADIAL  
 RADIAL DRILLING AND MILLING HEAD PORTAUTENSILE MOTORIZZATO RADIALE  
 РАДИАЛЬНАЯ СВЕРЛИЛЬНО-ФРЕЗЕРНАЯ ГОЛОВКА 径向钻头

TOEM BARUFFALDI



Code N.	D	Clamping application	Internal cooling	Direction	A	B	F	L	P	T	W	Max Torque (Nm)	Max Speed (rpm)	i	Z
KIN1-30/241-25/1.1-55	30	ER25	no	right	55	48	63	45	48	26	64	28	6000	1:1	6
KIN1-30/241-25/2.1-55	30	ER25	yes	right	55	51	63	45	48	26	64	28	6000	1:1	6
KIN1-40/241-25/1.1-80	40	ER25	no	right	80	59	70	53	71	33	75	50	6000	1:1	8
KIN1-40/241-25/2.1-80	40	ER25	yes	right	80	62	70	53	71	33	75	50	6000	1:1	8
KIN1-40/241-32/1.1-80	40	ER32	no	right	80	59	74	53	71	33	75	50	6000	1:1	8
KIN1-40/241-32/2.1-80	40	ER32	yes	right	80	62	74	53	71	33	75	50	6000	1:1	8

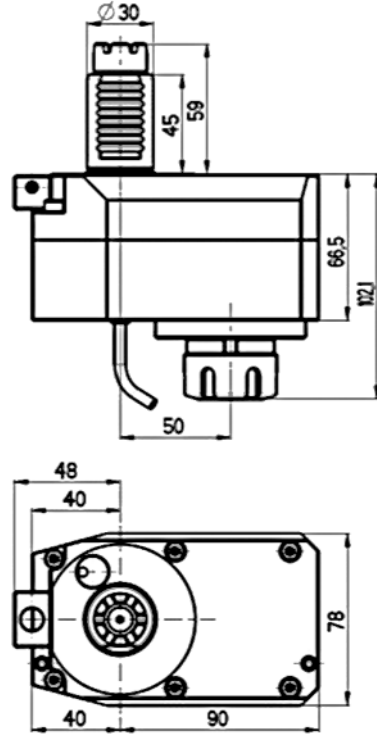
\* Linksausführung auf Anfrage \* Left version on enquiry \* Левое исполнение по запросу \* Versione gauche sur demande \* A richiesta la versione sinistra \* 左边版本可查。



AXIAL BOHR- UND FRÄSKOPF, ZURÜCKGESETZT  
 OFFSET AXIAL DRILLING AND MILLING HEAD  
 АКСИАЛЬНАЯ СВЕРЛИЛЬНО-ФРЕЗЕРНАЯ ГОЛОВКА СО СМЕЩЕННЫМ ЦЕНТРОМ

TÊTE DE PERÇAGE ET FRAISAGE AXIAL, ARRIÈRE  
 PORTAUTENSILE MOTORIZZATO ASSIALE DISASSATO  
 轴向钻铣头, 偏移

TOEM BARUFFALDI

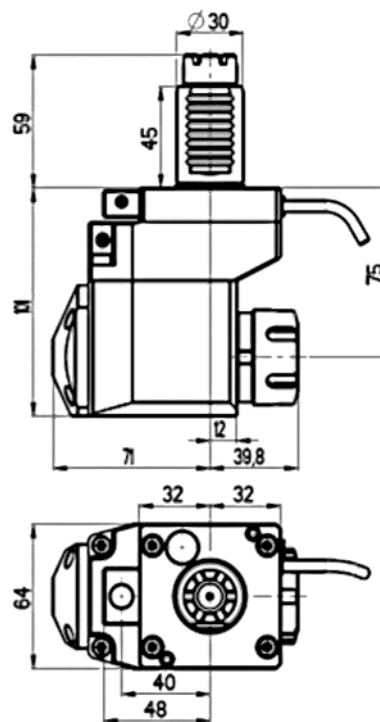


Code N.	D	ER	Cooling	A	B	F	L	P	T	W	Max: Torque Nm	Nmax	I (rev.)	Z
KIN30-341-25-1	30	ER25	EXT	50	40	102	45	48	90	78	14	12000	1:2	6

RADIAL BOHR- UND FRÄSKOPF, ZURÜCKGESETZT  
 OFFSET RADIAL DRILLING AND MILLING HEAD  
 РАДИАЛЬНАЯ СВЕРЛИЛЬНО-ФРЕЗЕРНАЯ ГОЛОВКА СО СМЕЩЕНИЕМ

TÊTE DE PERÇAGE ET FRAISAGE RADIALE, ARRIÈRE  
 PORTAUTENSILE MOTORIZZATO RADIALE ARRETRATO  
 径向钻头, 偏移

TOEM BARUFFALDI



Code N.	D	ER	Cooling	A	B	F	L	P	T	W	Max: Torque Nm	Nmax	I	Z
KIN30-441-25-1	30	ER25	EXT	75	71	39,8	45	48	101	64	28	6000	1:1	6
KIN30-441-25-2	30	ER25	EXT+INT	75	73,5	39,8	45	48	101	64	28	6000	1:1	6

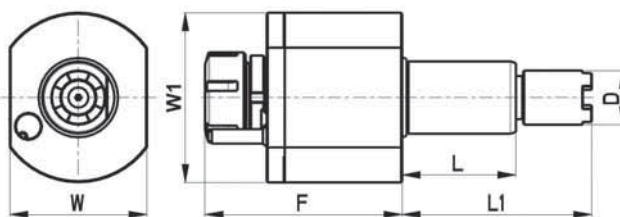
**KAMATEK**

**HAAS**



AXIAL BOHR- UND FRÄSKOPF TÊTE DE PERÇAGE ET FRAISAGE  
 AXIAL DRILLING AND MILLING HEAD PORTAUTENSILE MOTORIZZATO ASSIALE  
 АКСИАЛЬНАЯ СВЕРЛИЛЬНО-ФРЕЗЕРНАЯ ГОЛОВКА 轴向钻铣头

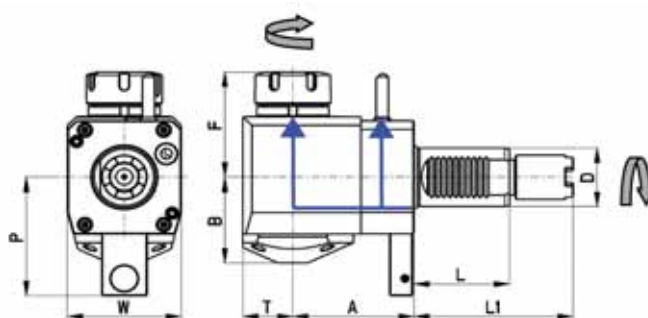
STEPPED - HAAS



Code N.	D	Clamping application	Internal cooling	F	L	L1	W	W1	Max Torque (Nm)	Max Speed (rpm)	i
KIN1-40/151-25/1A	40	ER25	no	105	63	104.85	76	94	50	6000	1:1
KIN1-40/151-25/2A	40	ER25	yes	105	63	104.85	76	94	50	6000	1:1
KIN1-40/151-32/1A	40	ER32	no	108	63	104.85	76	94	50	6000	1:1
KIN1-40/151-32/2A	40	ER32	yes	108	63	104.85	76	94	50	6000	1:1
KIN1-40/151-25/1B	40	ER25	no	105	63	117.55	76	94	50	6000	1:1
KIN1-40/151-25/2B	40	ER25	yes	105	63	117.55	76	94	50	6000	1:1
KIN1-40/151-32/1B	40	ER32	no	108	63	117.55	76	94	50	6000	1:1
KIN1-40/151-32/2B	40	ER32	yes	108	63	117.55	76	94	50	6000	1:1
KIN1-40/151-25/1C	40	ER25	no	105	63	130.25	76	94	50	6000	1:1
KIN1-40/151-25/2C	40	ER25	yes	105	63	130.25	76	94	50	6000	1:1
KIN1-40/151-32/1C	40	ER32	no	108	63	130.25	76	94	50	6000	1:1
KIN1-40/151-32/2C	40	ER32	yes	108	63	130.25	76	94	50	6000	1:1

RADIAL BOHR- UND FRÄSKOPF TÊTE DE PERÇAGE ET FRAISAGE RADIAL  
 RADIAL DRILLING AND MILLING HEAD PORTAUTENSILE MOTORIZZATO RADIALE  
 РАДИАЛЬНАЯ СВЕРЛИЛЬНО-ФРЕЗЕРНАЯ ГОЛОВКА 径向钻铣头

STEPPED - HAAS

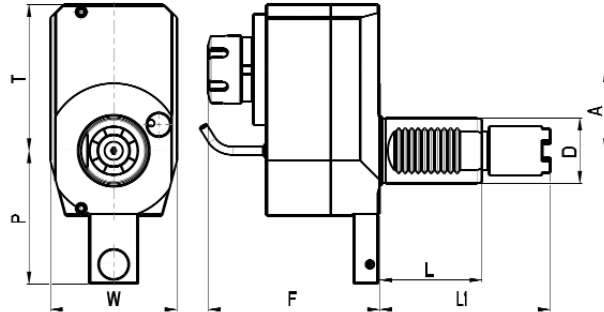


Code N.	D	Clamping application	Internal cooling	Direction	A	B	F	L	L1	P	T	W	Max Torque (Nm)	Max Speed (rpm)	i
KIN1-40/251-25/1.2-80A	40	ER25	no	left	80	59	70	63	104.85	82	33	75	50	6000	1:1
KIN1-40/251-25/2.2-80A	40	ER25	yes	left	80	62	70	63	104.85	82	33	75	50	6000	1:1
KIN1-40/251-32/1.2-80A	40	ER32	no	left	80	59	74	63	104.85	82	33	75	50	6000	1:1
KIN1-40/251-32/2.2-80A	40	ER32	yes	left	80	62	74	63	104.85	82	33	75	50	6000	1:1
KIN1-40/251-25/1.2-80B	40	ER25	no	left	80	59	70	63	117.55	82	33	75	50	6000	1:1
KIN1-40/251-25/2.2-80B	40	ER25	yes	left	80	62	70	63	117.55	82	33	75	50	6000	1:1
KIN1-40/251-32/1.2-80B	40	ER32	no	left	80	59	74	63	117.55	82	33	75	50	6000	1:1
KIN1-40/251-32/2.2-80B	40	ER32	yes	left	80	62	74	63	117.55	82	33	75	50	6000	1:1
KIN1-40/251-25/1.2-80C	40	ER25	no	left	80	59	70	63	130.25	82	33	75	50	6000	1:1
KIN1-40/251-25/2.2-80C	40	ER25	yes	left	80	62	70	63	130.25	82	33	75	50	6000	1:1
KIN1-40/251-32/1.2-80C	40	ER32	no	left	80	59	74	63	130.25	82	33	75	50	6000	1:1
KIN1-40/251-32/2.2-80C	40	ER32	yes	left	80	62	74	63	130.25	82	33	75	50	6000	1:1

AXIAL BOHR- UND FRÄSKOPF, ZURÜCKGESETZT  
 OFFSET AXIAL DRILLING AND MILLING HEAD  
 АКСИАЛЬНАЯ СВЕРЛИЛЬНО-ФРЕЗЕРНАЯ ГОЛОВКА СО СМЕЩЕННЫМ ЦЕНТРОМ

TÊTE DE PERÇAGE ET FRAISAGE AXIAL, ARRIÈRE  
 PORTAUTENSILE MOTORIZZATO ASSIALE DISASSATO  
 轴向钻头.偏移

HAAS



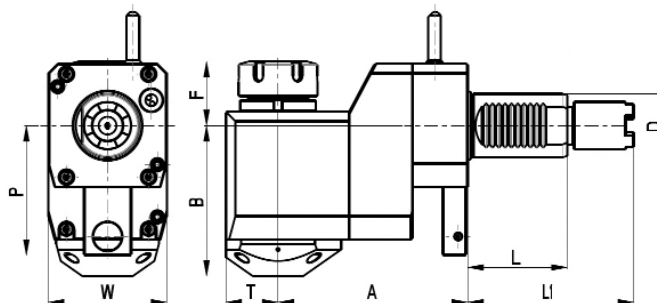
Code N.	D	Toolgrip	Internal cooling	Direction	A	F	L	L1	P	T	W
KIN40-351-25-1A	40	ER25	no	left	50	106	63	140,85	82	90	78
KIN40-351-25-2A	40	ER25	yes	left	50	106	63	140,85	82	90	78
KIN40-351-25-1B	40	ER25	no	left	50	106	63	117,55	82	90	78
KIN40-351-25-2B	40	ER25	yes	left	50	106	63	117,55	82	90	78
KIN40-351-25-1C	40	ER25	no	left	50	106	63	130,25	82	90	78
KIN40-351-25-2C	40	ER25	yes	left	50	106	63	130,25	82	90	78



RADIAL BOHR- UND FRÄSKOPF, ZURÜCKGESETZT  
 OFFSET RADIAL DRILLING AND MILLING HEAD  
 РАДИАЛЬНАЯ СВЕРЛИЛЬНО-ФРЕЗЕРНАЯ ГОЛОВКА СО СМЕЩЕНИЕМ

TÊTE DE PERÇAGE ET FRAISAGE RADIALE, ARRIÈRE  
 PORTAUTENSILE MOTORIZZATO RADIALE DISASSATO  
 径向钻头.偏移

HAAS



Code N.	D	Toolgrip	Internal cooling	Direction	A	B	F	L	L1	P	T	W
KIN40-451-25-1A	40	ER25	no	left	120	92	37	63	104,85	82	33	75
KIN40-451-25-2A	40	ER25	yes	left	120	95	37	63	104,85	82	33	75
KIN40-451-32-1A	40	ER32	no	left	120	92	41	63	104,85	82	33	75
KIN40-451-32-2A	40	ER32	yes	left	120	95	41	63	104,85	82	33	75
KIN40-451-25-1B	40	ER25	no	left	120	92	37	63	117,55	82	33	75
KIN40-451-25-2B	40	ER25	yes	left	120	95	37	63	117,55	82	33	75
KIN40-451-32-1B	40	ER32	no	left	120	92	41	63	117,55	82	33	75
KIN40-451-32-2B	40	ER32	yes	left	120	95	41	63	117,55	82	33	75
KIN40-451-25-1C	40	ER25	no	left	120	92	37	63	130,25	82	33	75
KIN40-451-25-2C	40	ER25	yes	left	120	95	37	63	130,25	82	33	75
KIN40-451-32-1C	40	ER32	no	left	120	92	41	63	130,25	82	33	75
KIN40-451-32-2C	40	ER32	yes	left	120	95	41	63	130,25	82	33	75

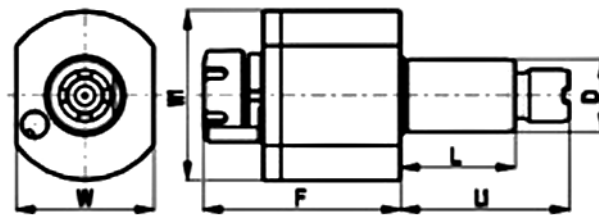
KAMATEK

OKUMA



AXIAL BOHR- UND FRÄSKOPF TÊTE DE PERÇAGE ET FRAISAGE  
 AXIAL DRILLING AND MILLING HEAD PORTAUTENSILE MOTORIZZATO ASSIALE  
 АКСИАЛЬНАЯ СВЕРЛИЛЬНО-ФРЕЗЕРНАЯ ГОЛОВКА 轴向钻铣头

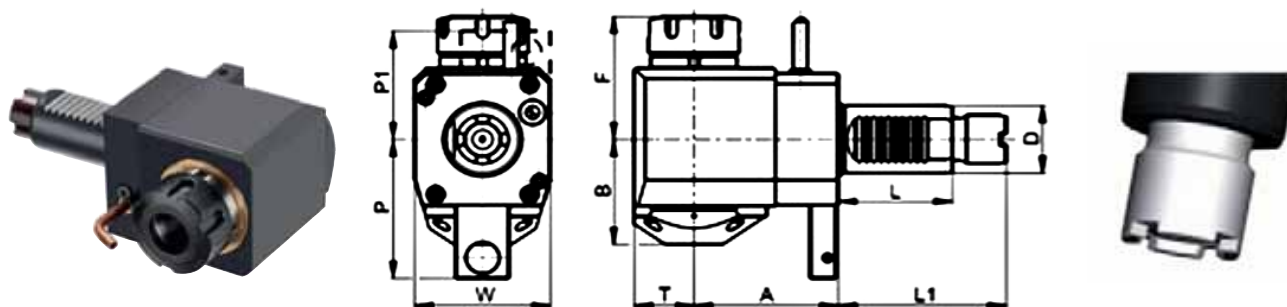
STEPPED - OKUMA



Code N.	D	Toolgrip	Internal cooling	F	L	L1	W	W1
KIN30-15125-1OK	30	ER25	no	87	55	69	62	69
KIN30-15125-2OK	30	ER25	yes	87	55	69	62	69
KIN40-151-251OK	40	ER25	no	105	63	93	76	94
KIN40-151-252OK	40	ER25	yes	105	63	93	76	94
KIN40-15132-1OK	40	ER32	no	108	63	93	76	94
KIN40-15132-2OK	40	ER32	yes	108	63	93	76	94
KIN40-151251OKB	40	ER25	no	105	63	101	76	94
KIN40-151252OKB	40	ER25	yes	105	63	101	76	94
KIN40-151321OKB	40	ER32	no	108	63	101	76	94
KIN40-151322OKB	40	ER32	yes	108	63	101	76	94

RADIAL BOHR- UND FRÄSKOPF  
 RADIAL DRILLING AND MILLING HEAD  
 РАДИАЛЬНАЯ СВЕРЛИЛЬНО-ФРЕЗЕРНАЯ ГОЛОВКА  
 TÊTE DE PERÇAGE ET FRAISAGE RADIAL  
 PORTAUTENSILE MOTORIZZATO RADIALE  
 径向钻头

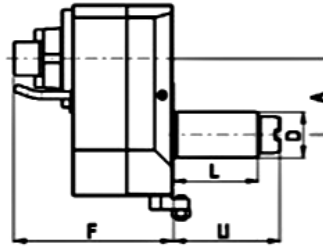
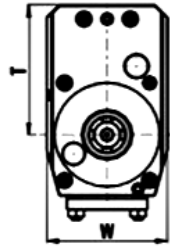
STEPPED - OKUMA



Code N.	D	Toolgrip	Internal cooling	Direction	A	B	F	L	L1	P	P1	T	W
KIN30-25125-185	30	ER25	no	right	85	48	63	55	69	-	57	26	64
KIN30-25125-285	30	ER25	yes	right	85	51	63	55	69	-	57	26	64
KIN30-25125155L	30	ER25	no	left	55	48	63	55	69	72	-	26	64
KIN30-25125255L	30	ER25	yes	left	55	51	63	55	69	72	-	26	64
KIN40-251251-80	40	ER25	no	left	80	59	70	63	93	82	-	33	75
KIN40-251252-80	40	ER25	yes	left	80	62	70	63	93	82	-	33	75
KIN40-251321-80	40	ER32	no	left	80	59	74	63	93	82	-	33	75
KIN40-251322-80	40	ER32	yes	left	80	62	74	63	93	82	-	33	75
KIN40-25125180B	40	ER25	no	left	80	59	70	63	101	82	-	33	75
KIN40-25125280B	40	ER25	yes	left	80	62	70	63	101	82	-	33	75
KIN40-25132180B	40	ER32	no	left	80	59	74	63	101	82	-	33	75
KIN40-25132280B	40	ER32	yes	left	80	62	74	63	101	82	-	33	75
KIN40-25125180R	40	ER25	no	right	80	59	70	63	93	-	-	33	75
KIN40-25125280R	40	ER25	yes	right	80	62	70	63	93	-	-	33	75
KIN40-25132180R	40	ER32	no	right	80	59	74	63	93	-	-	33	75
KIN40-25132280R	40	ER32	yes	right	80	62	74	63	93	-	-	33	75

AXIAL BOHR- UND FRÄSKOPF TÊTE DE PERÇAGE ET FRAISAGE AXIAL  
 AXIAL DRILLING AND MILLING HEAD PORTAUTENSILE MOTORIZZATO ASSIALE  
 РАДИАЛЬНАЯ СВЕРЛИЛЬНО-ФРЕЗЕРНАЯ ГОЛОВКА 径向钻铣头

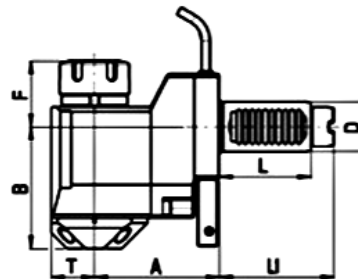
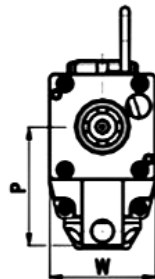
STEPPED - OKUMA



Code N.	D	Toolgrip	Internal cooling	Direction	A	F	L	L1	T	W
KIN30-35322-150	30	Ø22	no	right	50	103	55	69	85	78

RADIAL BOHR- UND FRÄSKOPF TÊTE DE PERÇAGE ET FRAISAGE RADIAL  
 OFFSET RADIAL DRILLING AND MILLING HEAD PORTAUTENSILE MOTORIZZATO RADIALE ARRETRATO  
 РАДИАЛЬНАЯ СВЕРЛИЛЬНО-ФРЕЗЕРНАЯ ГОЛОВКА 径向钻铣头

STEPPED - OKUMA



Code N.	D	Toolgrip	Internal cooling	Direction	A	B	F	L	L1	P	T	W
KIN30-45125-175	30	ER25	no	left	75	71	40	55	69	72	26	64
KIN30-45125-275	30	ER25	yes	left	75	74	40	55	69	72	26	64



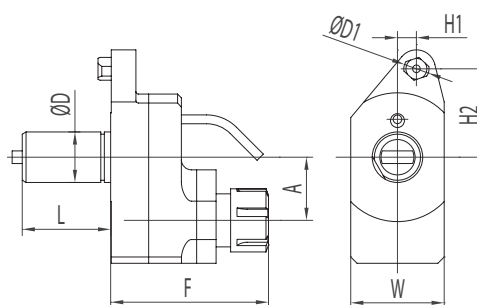
**KAMATEK**

**MAZAK**



AXIAL BOHR- UND FRÄSKOPF TÊTE DE PERÇAGE ET FRAISAGE  
 AXIAL DRILLING AND MILLING HEAD PORTAUTENSILE MOTORIZZATO ASSIALE  
 АКСИАЛЬНАЯ СВЕРЛИЛЬНО-ФРЕЗЕРНАЯ ГОЛОВКА 轴向钻铣头

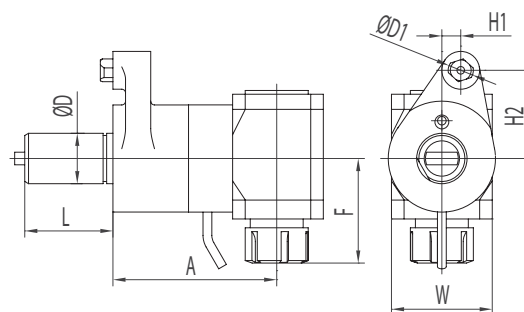
MAZAK



Code N.	D	ER	A	D1	F	H1	H2	L	W	Nmax	I
KMZ-40A0LE32E01	40	ER32	50	20	121	15	70	70	74	-	1:1

RADIAL BOHR- UND FRÄSKOPF TÊTE DE PERÇAGE ET FRAISAGE RADIAL  
 RADIAL DRILLING AND MILLING HEAD PORTAUTENSILE MOTORIZZATO RADIALE  
 РАДИАЛЬНАЯ СВЕРЛИЛЬНО-ФРЕЗЕРНАЯ ГОЛОВКА 径向钻铣头

MAZAK



Code N.	D	ER	A	D1	F	H1	H2	L	W	N	I
KMZ-40A9LE32E01	40	ER32	130	20	83	15	70	70	80	-	1:1

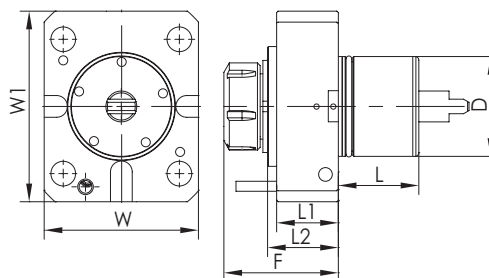
KAMATEK

MORI SEIKI



AXIAL BOHR- UND FRÄSKOPF TÊTE DE PERÇAGE ET FRAISSAGE  
 AXIAL DRILLING AND MILLING HEAD PORTAUTENSILE MOTORIZZATO ASSIALE  
 АКСИАЛЬНАЯ СВЕРЛИЛЬНО-ФРЕЗЕРНАЯ ГОЛОВКА 轴向钻铣头

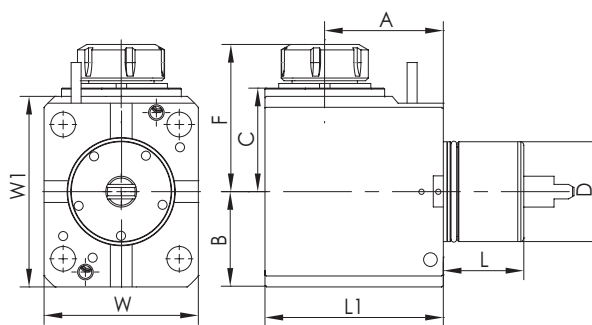
MORI SEIKI NL2000



Code N.	ER	D	F	L	L1	L2	W	W1	T(Nm)	N (rpm)	I
KIN2-60101-32-2	ER32	60	88.8	53	48.5	58	108	130	70	6000	1:1

RADIAL BOHR- UND FRÄSKOPF TÊTE DE PERÇAGE ET FRAISSAGE RADIAL  
 RADIAL DRILLING AND MILLING HEAD PORTAUTENSILE MOTORIZZATO RADIALE  
 РАДИАЛЬНАЯ СВЕРЛИЛЬНО-ФРЕЗЕРНАЯ ГОЛОВКА 径向钻铣头

MORI SEIKI NL2000



Code N.	ER	D	F	L	L1	A	B	C	W	W1	T(Nm)	N (rpm)	I
KIN2-60201-32-2	ER32	60	107.3	53	128	90	65	78	108	130	70	6000	1:1

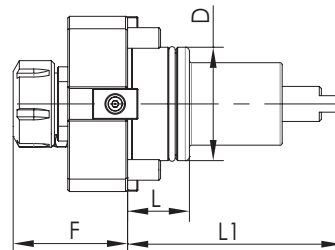
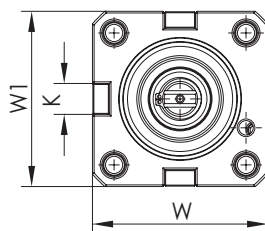
**KAMATEK**

**BMT 55**  
**BMT 65**  
**BMT 75**



AXIAL BOHR- UND FRÄSKOPF TÊTE DE PERÇAGE ET FRAISAGE  
 AXIAL DRILLING AND MILLING HEAD PORTAUTENSILE MOTORIZZATO ASSIALE  
 АКСИАЛЬНАЯ СВЕРЛИЛЬНО-ФРЕЗЕРНАЯ ГОЛОВКА 轴向钻头

BMT

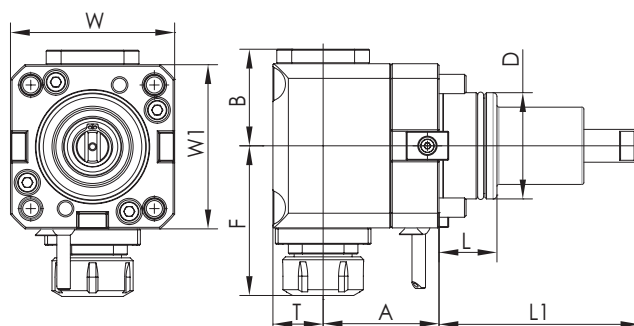


Code N.	BMT	ER	D	F	K	L	L1	W	W1	Max: Speed (RPM)	I	Max: Torque (Nm)
KIN-A04-55A	55	ER25	55	55.5	15	30	104	85	85	6000	1:1	40
KIN-A05-65A	65	ER32	65	72	18	32	112	94	94	6000	1:1	50
KIN-A05-75A	75	ER40	75	81.5	25	43	110	112	112	6000	1:1	70



RADIAL BOHR- UND FRÄSKOPF TÊTE DE PERÇAGE ET FRAISAGE RADIAL  
 RADIAL DRILLING AND MILLING HEAD PORTAUTENSILE MOTORIZZATO RADIALE  
 РАДИАЛЬНАЯ СВЕРЛИЛЬНО-ФРЕЗЕРНАЯ ГОЛОВКА 径向钻头

BMT



Code N.	BMT	ER	D	A	B	F	L	L1	T	W	W1	Max: Speed (Rpm)	I	Max: Torque (Nm)
KIN-B04.60-55A	55	ER25	55	60	50	82.5	30	104	26	85	85	4000	1:1	25
KIN-B05.72-65A	65	ER32	65	72	54	94.5	32	112	36	94	94	4000	1:1	40
KIN-B06.60-75A	75	ER40	75	60	65	107.5	43	110	45	112	112	4000	1:1	60



Part Name Operator  
 Radial Tool DIN5482 VDI30 Master

Time  
 10:17:00 am

Date  
 December 20, 2011



Actual Nominal Upper Tol. Lower Tol. Deviation

## ZEISS Calypso



Part Name  
 Radial Tool DIN5482 VDI30 ER25

Date  
 December 20, 2011

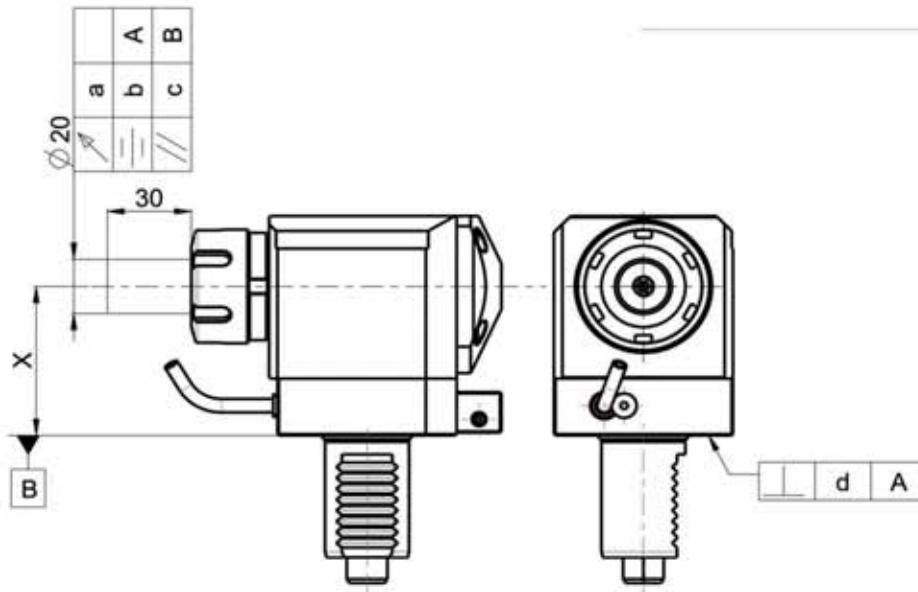
Part Number  
 KIN30-211-25-1

Time  
 10:17:00 am

Incremental Part Number  
 1002

Operator  
 Master

CMM  
 C32Bit



Actual Nominal Tolerance Deviation

Feature	Actual	Nominal	Tolerance	Deviation
a	0.006			
Y	0.0000 -0.0133	-0.0133	0.0000 0.0150	-0.013
c	0.0000 0.0044	0.0044	0.0000 0.0100	0.0044
d	0.0000 0.0077	0.0077	0.0000 0.0150	0.0077
X	-55.0000 -55.0016	-55.0016	2 -55.0000 0.0150	-0.002